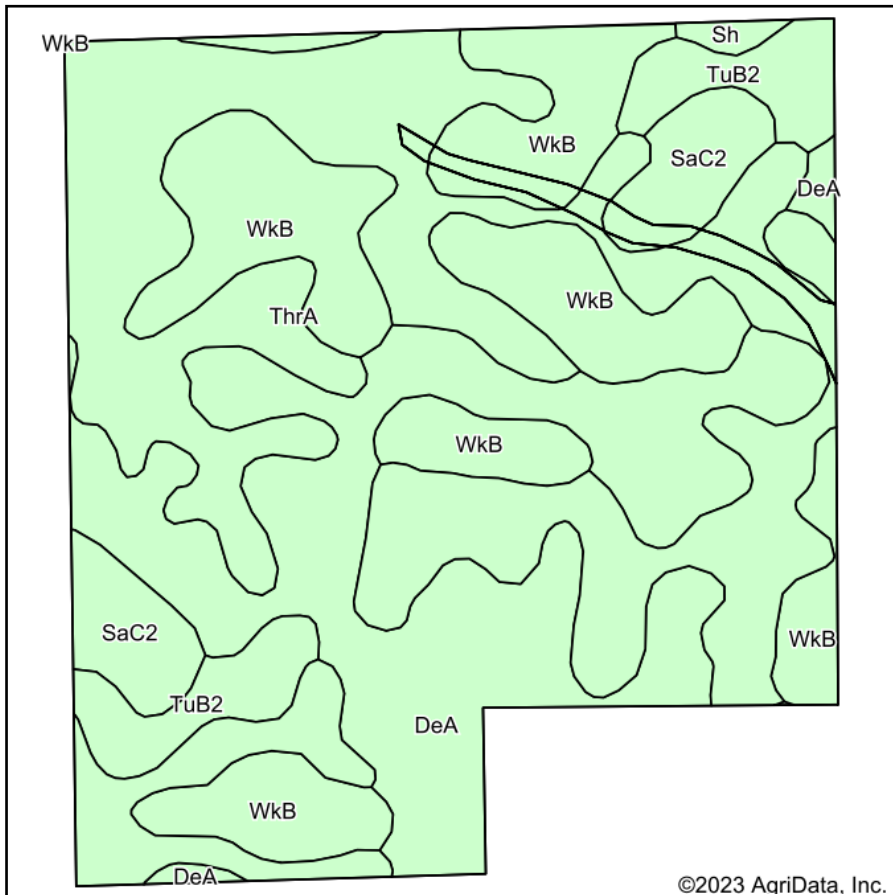
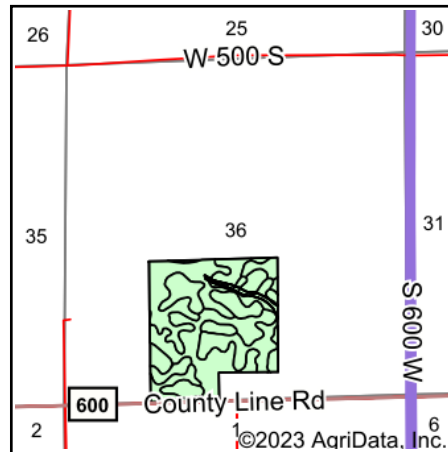


Soils Map



Soils data provided by USDA and NRCS.



State: **Indiana**
 County: **Tipton**
 Location: **36-21N-3E**
 Township: **Jefferson**
 Acres: **90.01**
 Date: **6/7/2023**



Area Symbol: IN159, Soil Area Version: 22

Code	Soil Description	Acres	Percent of field	Soil Drainage	Non-Irr Class *c	Corn Bu	Soybeans Bu	Winter wheat Bu
ThrA	Treaty silty clay loam, 0 to 1 percent slopes	35.09	39.0%	Poorly drained	IIw	181	64	61
DeA	Del Rey, sandy substratum-Crosby silt loams, 0 to 2 percent slopes	23.62	26.2%	Somewhat poorly drained	IIw	127	42	57
WkB	Williamstown silt loam, 2 to 6 percent slopes, eroded	20.74	23.0%	Moderately well drained	Ile	142	48	64
TuB2	Tuscola, till substratum-Strawn complex, 1 to 6 percent slopes, eroded	5.01	5.6%	Moderately well drained	Ile	135	47	64
SaC2	Sisson-Strawn complex, 6 to 12 percent slopes, eroded	4.80	5.3%	Well drained	IIIe	126	45	63
Sh	Sloan silt loam, sandy substratum, occasionally flooded	0.75	0.8%	Very poorly drained	IIIw	155	42	62
Weighted Average					2.06	152.1	52.4	60.9

*c: Using Capabilities Class Dominant Condition Aggregation Method
 Soils data provided by USDA and NRCS.