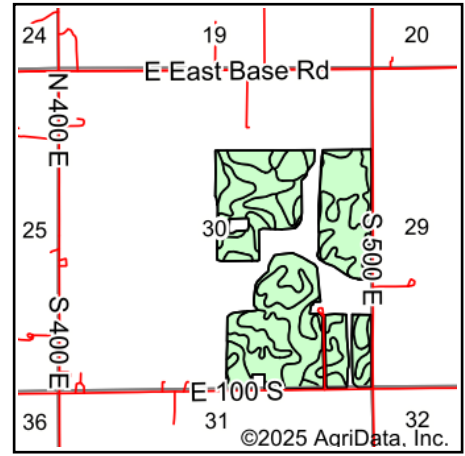
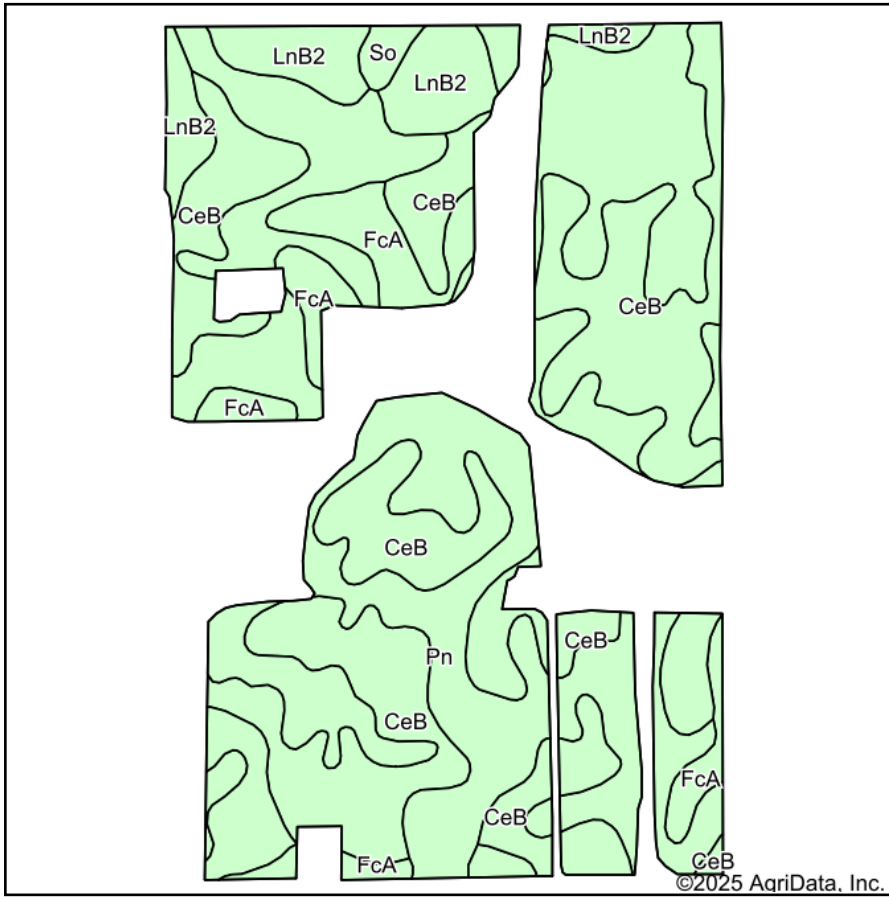


# Soils Map



State: **Indiana**  
 County: **Randolph**  
 Location: **30-20N-15E**  
 Township: **Wayne**  
 Acres: **170.51**  
 Date: **8/21/2025**



Area Symbol: IN135, Soil Area Version: 28

| Code                    | Soil Description   | Acres | Percent of field | Non-Irr Class *c | Corn Bu      | Soybeans Bu |
|-------------------------|--|-------|------------------|------------------|--------------|-------------|
| Pn                      | Patton silty clay loam, New Castle Till Plain, 0 to 2 percent slopes | 79.20 | 46.5%            | IIw              | 172          | 60          |
| CeB                     | Celina silt loam, 1 to 4 percent slopes                              | 63.90 | 37.5%            | IIe              | 117          | 41          |
| FcA                     | Fincastle-Crosby silt loams, 0 to 2 percent slopes                   | 12.85 | 7.5%             | IIw              | 156          | 51          |
| LnB2                    | Losantville silt loam, 2 to 6 percent slopes, eroded                 | 12.36 | 7.2%             | IIe              | 113          | 40          |
| So                      | Sloan silt loam, 0 to 2 percent slopes, frequently flooded           | 2.20  | 1.3%             | IIIw             | 147          | 40          |
| <b>Weighted Average</b> |  |       |                  | <b>2.01</b>      | <b>145.6</b> | <b>50.5</b> |

\*c: Using Capabilities Class Dominant Condition Aggregation Method