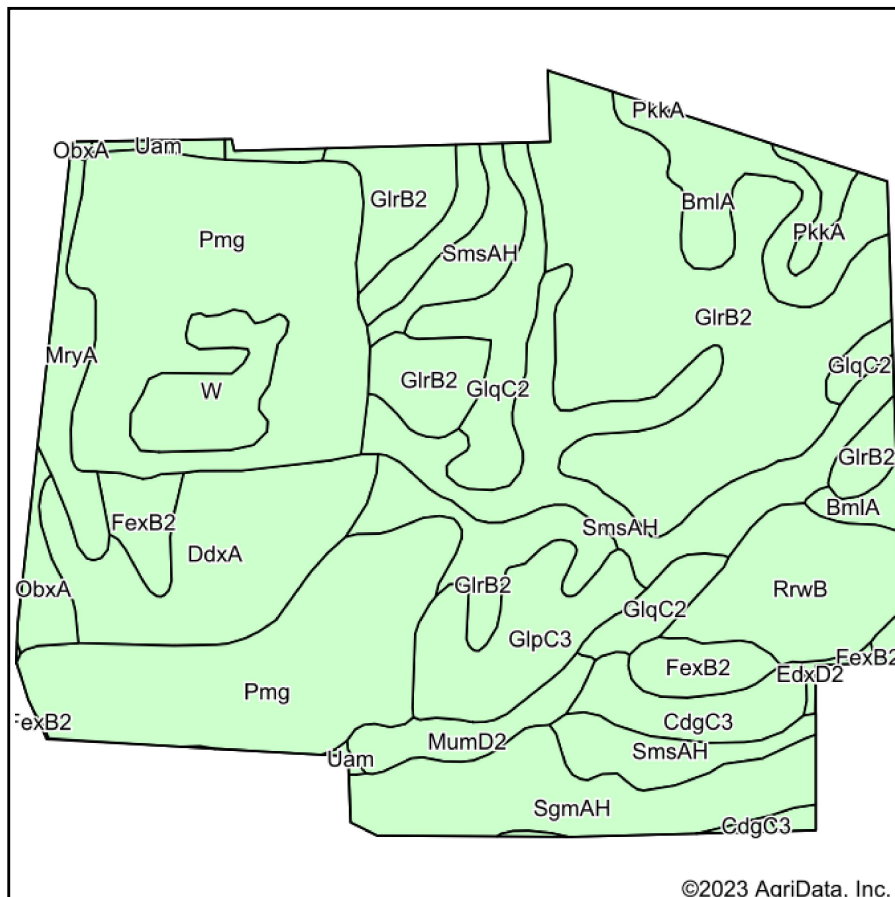
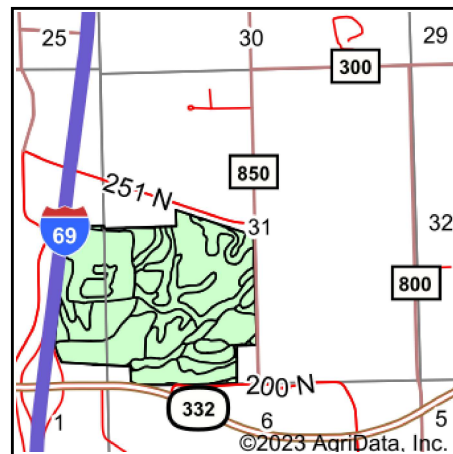


# Soils Map



Soils data provided by USDA and NRCS.



State: **Indiana**  
 County: **Delaware**  
 Location: **31-21N-9E**  
 Township: **Harrison**  
 Acres: **184.14**  
 Date: **1/4/2023**



Maps Provided By:  
  
 CUSTOMIZED ONLINE MAPPING  
 © AgriData, Inc. 2021 www.AgriDataInc.com



Area Symbol: IN035, Soil Area Version: 27

Code	Soil Description	Acres	Percent of field	Non-Irr Class *c	Corn Bu	Soybeans Bu
Pmg	Pits, gravel	42.71	23.2%		10	3
GlrB2	Glynwood silt loam, 1 to 4 percent slopes, eroded	40.61	22.1%	Ile	129	44
SmsAH	Sloan silt loam, 0 to 2 percent slopes, frequently flooded	18.46	10.0%	IIIw	147	40
DdxA	Digby-Haney silt loams, 0 to 1 percent slopes	12.29	6.7%	IIw	151	51
SgmAH	Shoals silt loam, 0 to 2 percent slopes, frequently flooded, brief duration	10.50	5.7%	IIw	125	43
GlqC2	Glynwood clay loam, ground moraine, 6 to 12 percent slopes, eroded	10.33	5.6%	IIIe	120	30
BmlA	Blount-Del Rey silt loams, 0 to 1 percent slopes	8.30	4.5%	IIw	141	46
RrwB	Rawson loam, 1 to 5 percent slopes	8.28	4.5%	Ile	142	50
GlpC3	Glynwood clay loam, 6 to 12 percent slopes, severely eroded	7.40	4.0%	IVe	112	29
FexB2	Fox loam, 2 to 6 percent slopes, eroded	4.67	2.5%	Ile	103	36
W	Water	4.49	2.4%			
CdGC3	Casco sandy clay loam, 6 to 15 percent slopes, severely eroded	4.27	2.3%	IVe	109	37
MryA	Millgrove silty clay loam, 0 to 1 percent slopes	3.90	2.1%	IIw	171	49
MumD2	Morley silt loam, 10 to 15 percent slopes, eroded	3.10	1.7%	IVe	101	35
ObxA	Ockley silt loam, 0 to 2 percent slopes	2.37	1.3%	Ie	134	47
PkkA	Pewamo silty clay loam, 0 to 1 percent slopes	1.17	0.6%	IIw	157	47
Uam	Udorthents, loamy	0.71	0.4%		126	44
ThrA	Treaty silty clay loam, 0 to 1 percent slopes	0.32	0.2%	IIw	181	64
EdxD2	Eldean silt loam, 12 to 18 percent slopes, eroded	0.26	0.1%	IVe	84	29
Weighted Average				*-	100.8	32.1

\*c: Using Capabilities Class Dominant Condition Aggregation Method

\*- Non Irr Class weighted average cannot be calculated on the current soils data due to missing data.

Soils data provided by USDA and NRCS.