

USDA Farm 3255 Tract 1536

Map prepared on: 3/16/2023

CRP

TRS: 13N13E15



Administered by: Fayette County, Indiana

118.95 Tract acres
 103.79 Cropland acres
 0 CRP acres

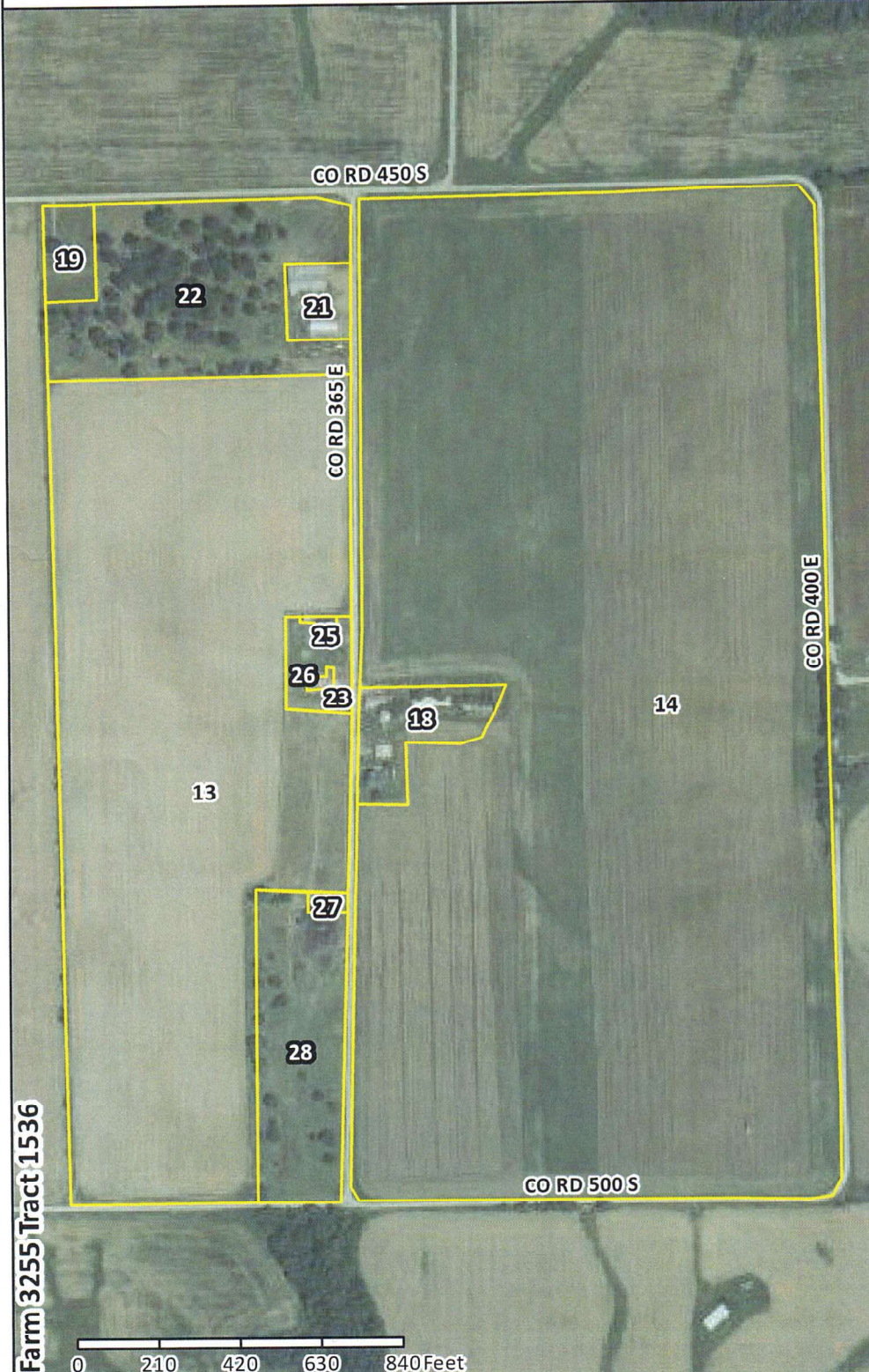
CLU

Fayette

Wetland Determination Identifiers:

- Restricted Use
- ▼ Limited Restrictions
- Exempt from Conservation Compliance Provisions

Source: Primarily USDA NAIP 2022 imagery; IDHS or Dynamap roads; FSA data 2023-03-13 14:24:05



CLU	Acres	HEL	LC	Contract	Prac	Yr	C	I
13	31.97	H	2					Y
14	71.82	H	2					Y
18	1.66	U	10					N
19	0.76	U	10					N
21	0.77	U	10					N
22	6.77	U	2					N
23	0.17	U	10					N
25	0.12	U	10					N
26	0.7	U	2					N
27	0.13	U	10					N
28	4.08	U	2					N

Farm 3255 Tract 1536

USDA FSA maps are for FSA program administration only. This map does not represent a legal survey or reflect actual ownership; rather it depicts information provided directly from the producer and/or NAIP imagery. The producer accepts the data 'as is' and assumes all risks associated with its use. The USDA Farm Service Agency assumes no responsibility for actual or consequential damage incurred as a result of any user's reliance on this data outside FSA programs. Wetland identifiers do not represent the size, shape, or specific determination of the area. Refer to your original determination (CPA-026 and attached maps) for exact boundaries and determinations or contact NRCS

USDA Farm 3255 Tract 1663
 Administered by: Fayette County, Indiana

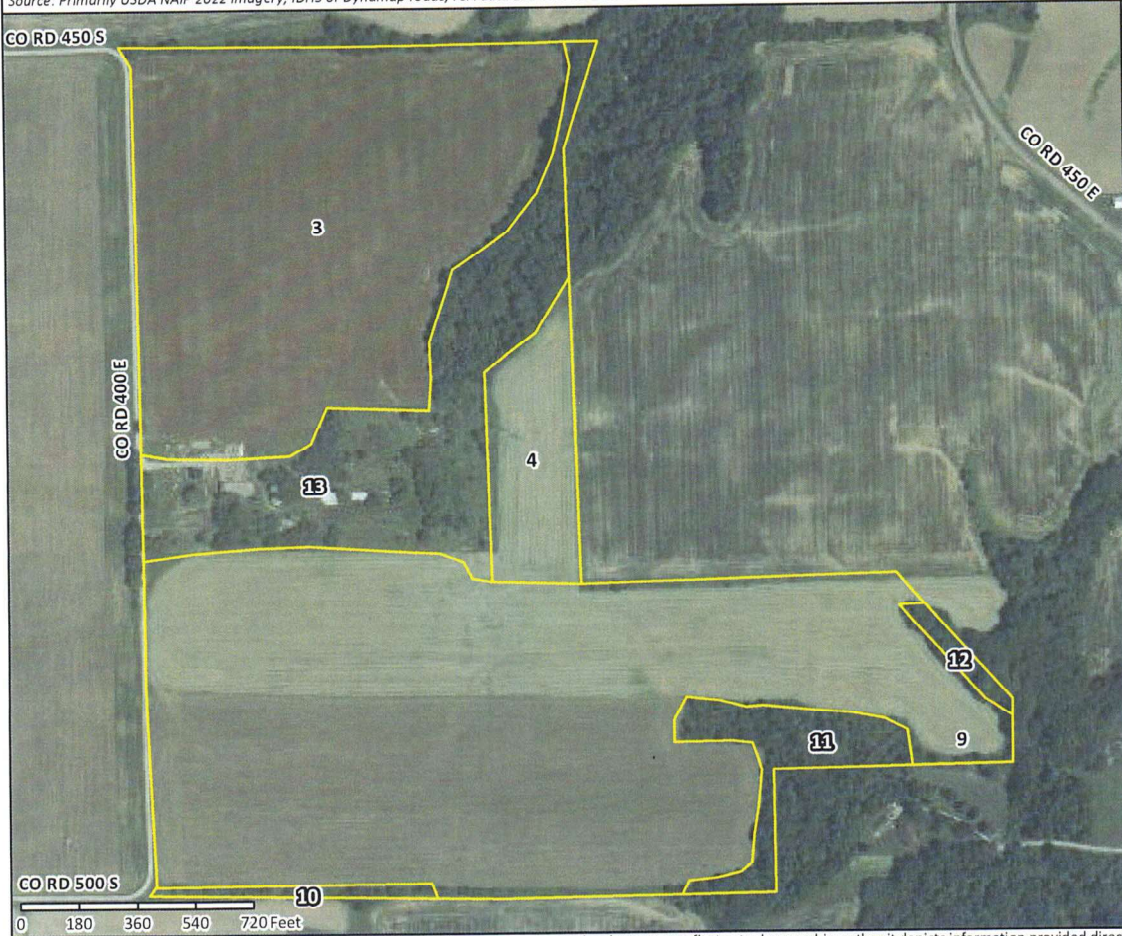
Map prepared on: 3/16/2023
 104.29 Tract acres
 85.93 Cropland acres
 0 CRP acres

□ CRP
 □ CLU

Wetland Determination Identifiers:
 ● Restricted Use **TRS: 13N13E15**
 ▼ Limited Restrictions **Fayette**
 ■ Exempt from Conservation Compliance Provisions



Source: Primarily USDA NAIP 2022 imagery; IDHS or Dynamap roads; FSA data 2023-03-13 14:24:05



CLU	Acres	HEL	LC	Contract	Prac	Yr	C	I
3	31.33	N	2					Y
4	4.88	N	2					Y
9	49.72	H	2					Y
10	0.69	U	10					N
11	3.35	U	10					N
12	0.62	U	10					N
13	13.7	U	10					N

USDA FSA maps are for FSA program administration only. This map does not represent a legal survey or reflect actual ownership; rather it depicts information provided directly from the producer and/or NAIP imagery. The producer accepts the data 'as is' and assumes all risks associated with its use. The USDA Farm Service Agency assumes no responsibility for actual or consequential damage incurred as a result of any user's reliance on this data outside FSA programs. Wetland identifiers do not represent the size, shape, or specific determination of the area. Refer to your original determination (CPA-026 and attached maps) for exact boundaries and determinations or contact NRCS.

USDA Farm 3255 Tract 2864

Map prepared on: 3/16/2023

CRP **TRS: 13N13E15**
 CLU **Fayette**

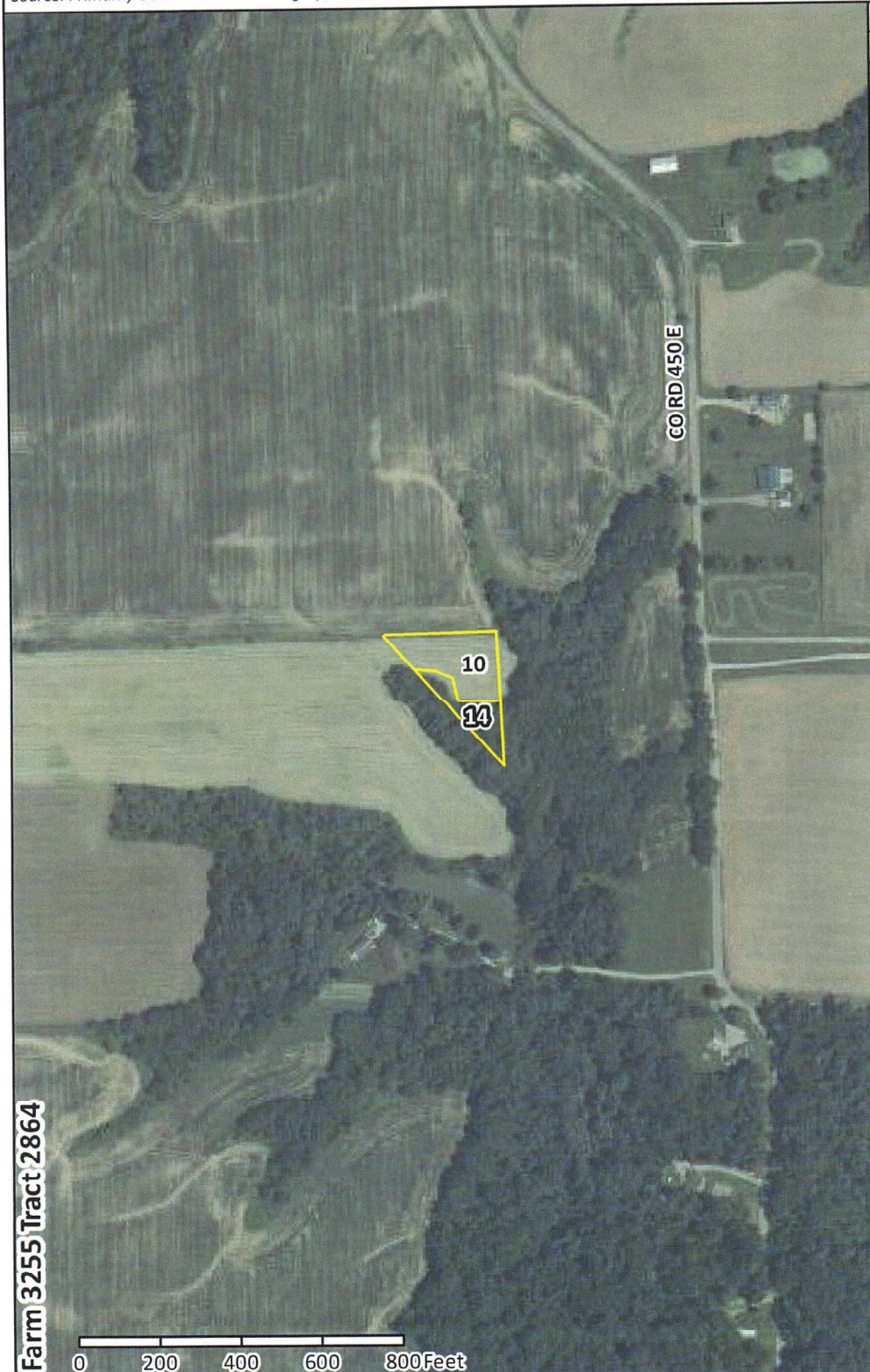


Administered by: Fayette County, Indiana

1.09 Tract acres
 0.73 Cropland acres
 0 CRP acres

Wetland Determination Identifiers:
 ● Restricted Use
 ▼ Limited Restrictions
 ■ Exempt from Conservation Compliance Provisions

Source: Primarily USDA NAIP 2022 imagery; IDHS or Dynamap roads; FSA data 2023-03-13 14:24:05



CLU	Acres	HEL	LC	Contract	Prac	Yr	C I
10	0.73	H	2				Y
14	0.36	U	10				N

USDA FSA maps are for FSA program administration only. This map does not represent a legal survey or reflect actual ownership; rather it depicts information provided directly from the producer and/or NAIP imagery. The producer accepts the data 'as is' and assumes all risks associated with its use. The USDA Farm Service Agency assumes no responsibility for actual or consequential damage incurred as a result of any user's reliance on this data outside FSA programs. Wetland identifiers do not represent the size, shape, or specific determination of the area. Refer to your original determination (CPA-026 and attached maps) for exact boundaries and determinations or contact NRCS