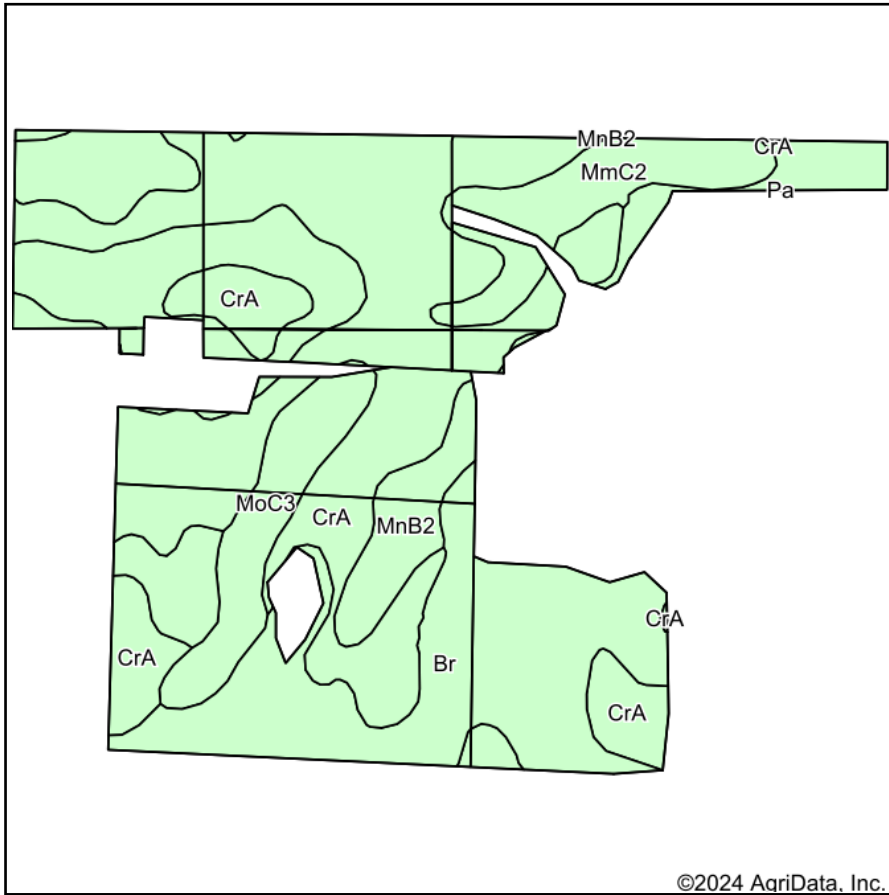
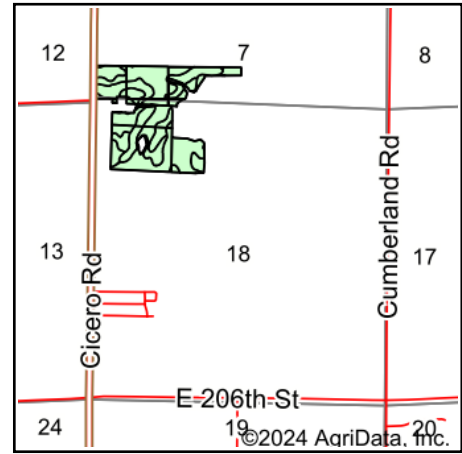


# Soils Map



Soils data provided by USDA and NRCS.



State: **Indiana**  
 County: **Hamilton**  
 Location: **18-19N-5E**  
 Township: **Noblesville**  
 Acres: **63.24**  
 Date: **8/26/2024**



Maps Provided By:



© AgriData, Inc. 2023

www.AgriDataInc.com



Area Symbol: IN057, Soil Area Version: 24

Code	Soil Description	Acres	Percent of field	Soil Drainage	Non-Irr Class *c	Corn Bu	Soybeans Bu	Winter wheat Bu
CrA	Crosby silt loam, fine-loamy subsoil, 0 to 2 percent slopes	27.49	43.5%	Somewhat poorly drained	IIw	154	51	69
Br	Brookston silty clay loam, 0 to 2 percent slopes	24.67	39.0%	Poorly drained	IIw	173	51	70
MmC2	Miami silt loam, 6 to 12 percent slopes, eroded	4.32	6.8%	Moderately well drained	IIIe	133	47	58
MoC3	Miami clay loam, 6 to 12 percent slopes, severely eroded	4.02	6.4%	Moderately well drained	IVe	126	44	56
MnB2	Miami silt loam, 2 to 6 percent slopes, eroded	2.74	4.3%	Moderately well drained	Ile	142	49	63
<b>Weighted Average</b>					<b>2.20</b>	<b>157.7</b>	<b>50.2</b>	<b>67.6</b>

\*c: Using Capabilities Class Dominant Condition Aggregation Method

Soils data provided by USDA and NRCS.