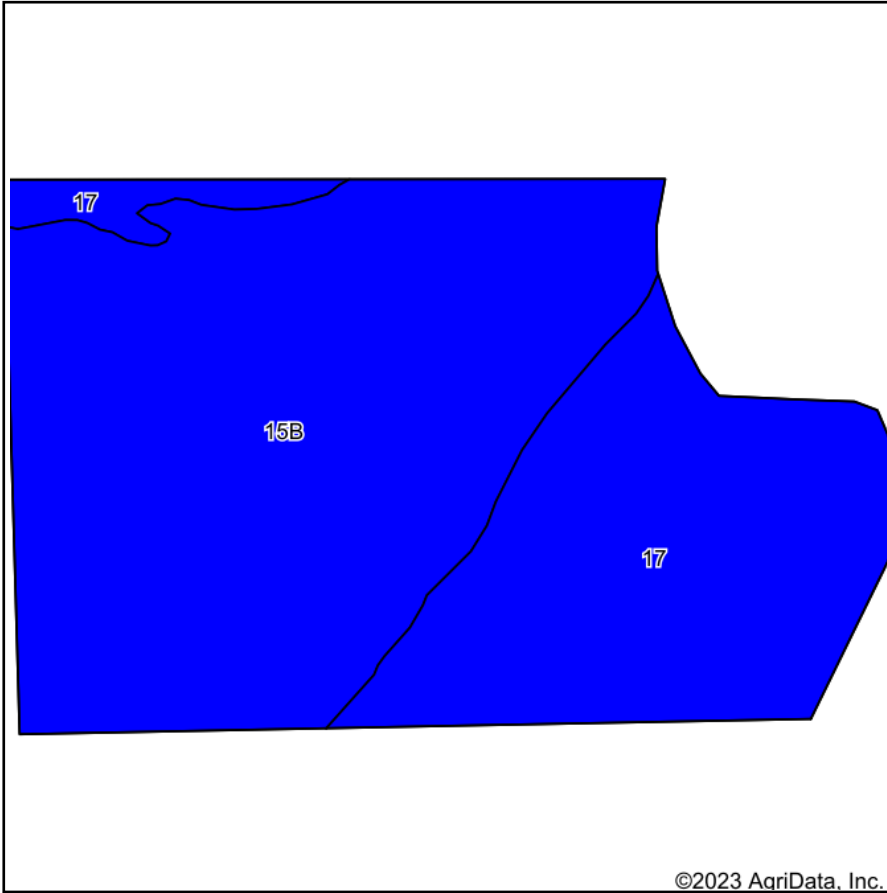
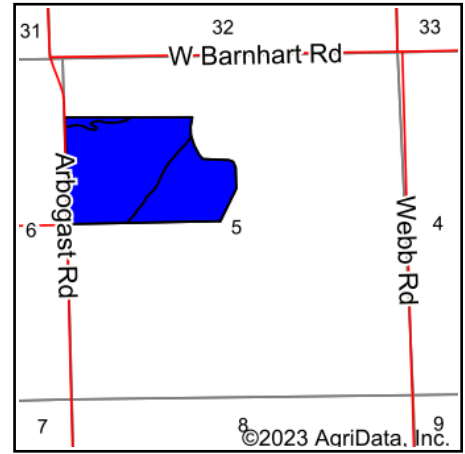


# Soils Map



Soils data provided by USDA and NRCS.



State: **Michigan**  
 County: **Branch**  
 Location: **5-6S-7W**  
 Township: **Batavia**  
 Acres: **83.97**  
 Date: **5/5/2023**



Maps Provided By:



© AgriData, Inc. 2023

www.AgriDataInc.com



Area Symbol: MI023, Soil Area Version: 20

Code	Soil Description	Acres	Percent of field	Non-Irr Class Legend	Non-Irr Class *c	Corn Bu	Soybeans Bu	Winter wheat Bu	*n NCCPI Overall	*n NCCPI Corn	*n NCCPI Small Grains	*n NCCPI Soybeans
15B	Locke fine sandy loam, 1 to 4 percent slopes	53.23	63.4%		Ile	95	32	42	60	59	51	58
17	Barry loam, 0 to 2 percent slopes	30.74	36.6%		IIw				72	72	51	60
<b>Weighted Average</b>					<b>2.00</b>	<b>60.2</b>	<b>20.3</b>	<b>26.6</b>	<b>*n 64.4</b>	<b>*n 63.8</b>	<b>*n 51</b>	<b>*n 58.7</b>

\*n: The aggregation method is "Weighted Average using all components"

\*c: Using Capabilities Class Dominant Condition Aggregation Method

Soils data provided by USDA and NRCS.