

PLAT OF SURVEY

144.369 ACRE TRACT

CONGRESS LANDS WEST OF THE MIAMI RIVER
SECTION 20 & 21, TOWN 5, RANGE 2,
MILFORD TOWNSHIP, BUTLER COUNTY, OHIO

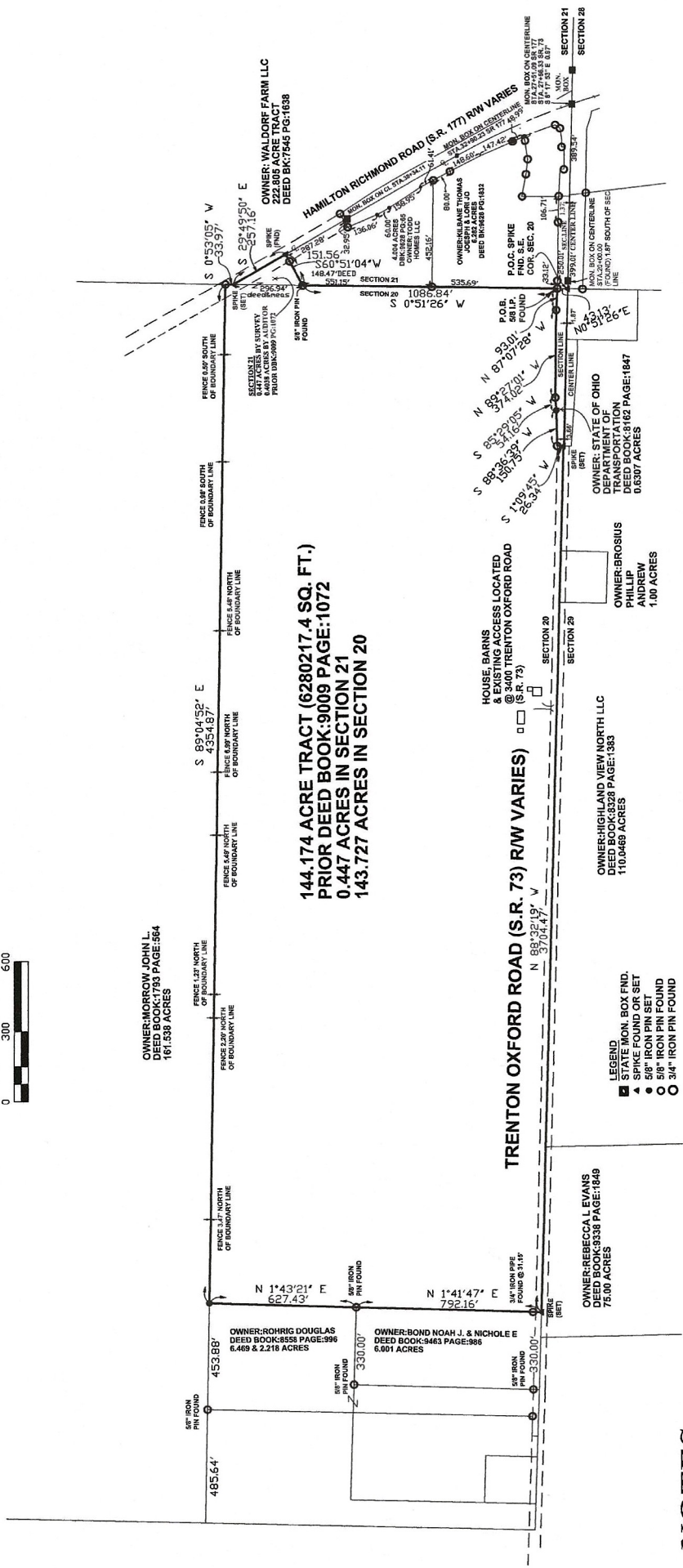
FOR: GRACE FARM LLC

DATE: 6/8/2021

SCALE: 1"=300'



Bearings shown hereon are based on
State Plane Coordinates (Ohio South
Zone) MAY 2021 and are used to
denote angles only.



144.174 ACRE TRACT (6280217.4 SQ. FT.)
PRIOR DEED BOOK: 9009 PAGE: 1072
0.447 ACRES IN SECTION 21
143.727 ACRES IN SECTION 20

CLOSURE SHEET 144.174 ACRE COMBINATION TRACT

Point	Bearing	Distance	Area
1	N 87°07'28" V	530.00	537,793.81
2	N 89°27'01" V	593.01	1,357,187.01
3	S 85°29'05" V	541.6	1,356,632.01
4	S 88°35'39" V	1,027.5	1,356,759.02
5	S 01°09'45" V	26.34	1,356,606.31
6	N 01°14'21" V	792.16	1,356,607.78
7	N 01°43'21" E	627.43	1,356,607.78
8	S 89°04'35" E	4,354.87	1,356,607.78
9	S 00°59'05" V	3,037.7	1,356,607.78
10	S 29°49'51" E	2,071.6	1,356,607.78
11	S 69°51'04" V	1,511.56	1,356,607.78
12	S 00°51'26" V	1,085.84	1,356,607.78
13	S 00°51'26" V	1,085.84	1,356,607.78
14	S 00°51'26" V	1,085.84	1,356,607.78
15	S 00°51'26" V	1,085.84	1,356,607.78
16	S 00°51'26" V	1,085.84	1,356,607.78
17	S 00°51'26" V	1,085.84	1,356,607.78
18	S 00°51'26" V	1,085.84	1,356,607.78
19	S 00°51'26" V	1,085.84	1,356,607.78
20	S 00°51'26" V	1,085.84	1,356,607.78
21	S 00°51'26" V	1,085.84	1,356,607.78
22	S 00°51'26" V	1,085.84	1,356,607.78
23	S 00°51'26" V	1,085.84	1,356,607.78
24	S 00°51'26" V	1,085.84	1,356,607.78
25	S 00°51'26" V	1,085.84	1,356,607.78
26	S 00°51'26" V	1,085.84	1,356,607.78
27	S 00°51'26" V	1,085.84	1,356,607.78
28	S 00°51'26" V	1,085.84	1,356,607.78
29	S 00°51'26" V	1,085.84	1,356,607.78
30	S 00°51'26" V	1,085.84	1,356,607.78
31	S 00°51'26" V	1,085.84	1,356,607.78
32	S 00°51'26" V	1,085.84	1,356,607.78
33	S 00°51'26" V	1,085.84	1,356,607.78
34	S 00°51'26" V	1,085.84	1,356,607.78
35	S 00°51'26" V	1,085.84	1,356,607.78
36	S 00°51'26" V	1,085.84	1,356,607.78
37	S 00°51'26" V	1,085.84	1,356,607.78
38	S 00°51'26" V	1,085.84	1,356,607.78
39	S 00°51'26" V	1,085.84	1,356,607.78
40	S 00°51'26" V	1,085.84	1,356,607.78
41	S 00°51'26" V	1,085.84	1,356,607.78
42	S 00°51'26" V	1,085.84	1,356,607.78
43	S 00°51'26" V	1,085.84	1,356,607.78
44	S 00°51'26" V	1,085.84	1,356,607.78
45	S 00°51'26" V	1,085.84	1,356,607.78
46	S 00°51'26" V	1,085.84	1,356,607.78
47	S 00°51'26" V	1,085.84	1,356,607.78
48	S 00°51'26" V	1,085.84	1,356,607.78
49	S 00°51'26" V	1,085.84	1,356,607.78
50	S 00°51'26" V	1,085.84	1,356,607.78
51	S 00°51'26" V	1,085.84	1,356,607.78
52	S 00°51'26" V	1,085.84	1,356,607.78
53	S 00°51'26" V	1,085.84	1,356,607.78
54	S 00°51'26" V	1,085.84	1,356,607.78
55	S 00°51'26" V	1,085.84	1,356,607.78
56	S 00°51'26" V	1,085.84	1,356,607.78
57	S 00°51'26" V	1,085.84	1,356,607.78
58	S 00°51'26" V	1,085.84	1,356,607.78
59	S 00°51'26" V	1,085.84	1,356,607.78
60	S 00°51'26" V	1,085.84	1,356,607.78
61	S 00°51'26" V	1,085.84	1,356,607.78
62	S 00°51'26" V	1,085.84	1,356,607.78
63	S 00°51'26" V	1,085.84	1,356,607.78
64	S 00°51'26" V	1,085.84	1,356,607.78
65	S 00°51'26" V	1,085.84	1,356,607.78
66	S 00°51'26" V	1,085.84	1,356,607.78
67	S 00°51'26" V	1,085.84	1,356,607.78
68	S 00°51'26" V	1,085.84	1,356,607.78
69	S 00°51'26" V	1,085.84	1,356,607.78
70	S 00°51'26" V	1,085.84	1,356,607.78
71	S 00°51'26" V	1,085.84	1,356,607.78
72	S 00°51'26" V	1,085.84	1,356,607.78
73	S 00°51'26" V	1,085.84	1,356,607.78
74	S 00°51'26" V	1,085.84	1,356,607.78
75	S 00°51'26" V	1,085.84	1,356,607.78
76	S 00°51'26" V	1,085.84	1,356,607.78
77	S 00°51'26" V	1,085.84	1,356,607.78
78	S 00°51'26" V	1,085.84	1,356,607.78
79	S 00°51'26" V	1,085.84	1,356,607.78
80	S 00°51'26" V	1,085.84	1,356,607.78
81	S 00°51'26" V	1,085.84	1,356,607.78
82	S 00°51'26" V	1,085.84	1,356,607.78
83	S 00°51'26" V	1,085.84	1,356,607.78
84	S 00°51'26" V	1,085.84	1,356,607.78
85	S 00°51'26" V	1,085.84	1,356,607.78
86	S 00°51'26" V	1,085.84	1,356,607.78
87	S 00°51'26" V	1,085.84	1,356,607.78
88	S 00°51'26" V	1,085.84	1,356,607.78
89	S 00°51'26" V	1,085.84	1,356,607.78
90	S 00°51'26" V	1,085.84	1,356,607.78
91	S 00°51'26" V	1,085.84	1,356,607.78
92	S 00°51'26" V	1,085.84	1,356,607.78
93	S 00°51'26" V	1,085.84	1,356,607.78
94	S 00°51'26" V	1,085.84	1,356,607.78
95	S 00°51'26" V	1,085.84	1,356,607.78
96	S 00°51'26" V	1,085.84	1,356,607.78
97	S 00°51'26" V	1,085.84	1,356,607.78
98	S 00°51'26" V	1,085.84	1,356,607.78
99	S 00°51'26" V	1,085.84	1,356,607.78
100	S 00°51'26" V	1,085.84	1,356,607.78

NOTES

- 1) Source documents are as shown hereon.
- 2) Occupation in general fits Survey except as shown.
- 3) Monumentation found is in good condition.
- 4) Reference surveys used: B.C.E.R.L.S. Volume: 9 Page: 115; Volume: 20 Page: 35; Volume: 43 Page: 147; Volume: 46 Page: 140; Volume: 47 Page: 88; Volume: 52 Page: 158; Volume: 60 Page: 115; Volume: 62 Page: 22; Volume: 62 Page: 117.
- 5) Section line established based upon plat of survey by Cogan (1988) Vol. 20 Pg. 35 B.C.E.R.L.S.
- 6) ACCESS NOTE: NO NEW ACCESS THIS SURVEY



By: Brosey Land Surveyors
I certify that the hereon platted property was measured to acceptable Survey Standards only.

Registered Surveyor, 6492 in Ohio