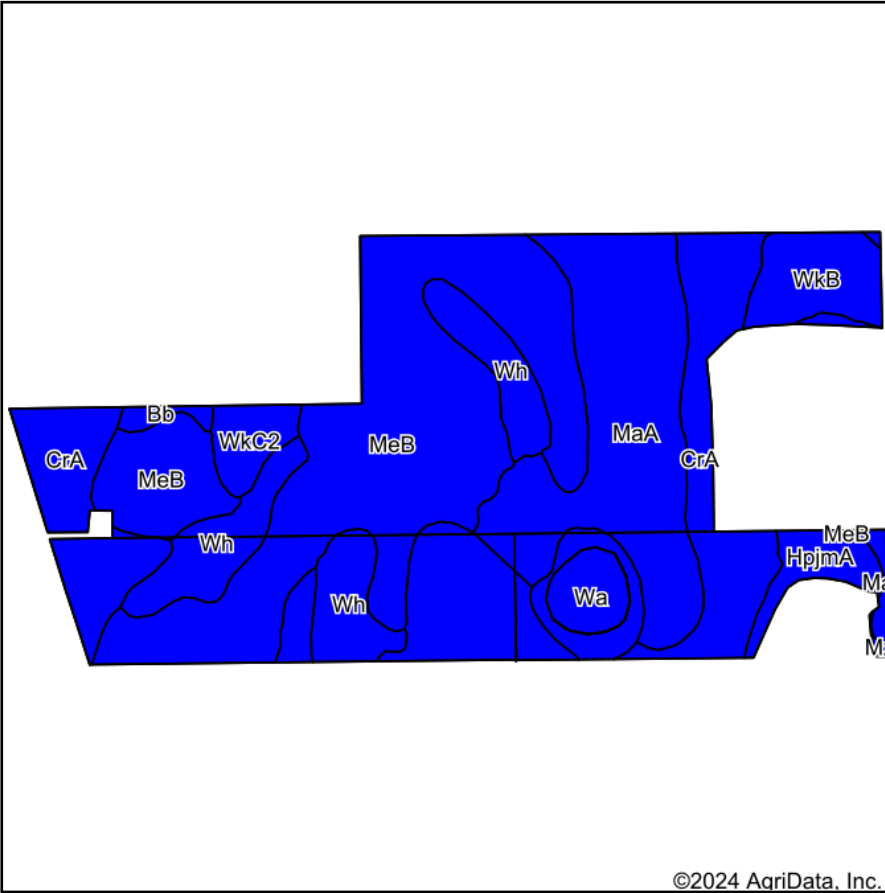
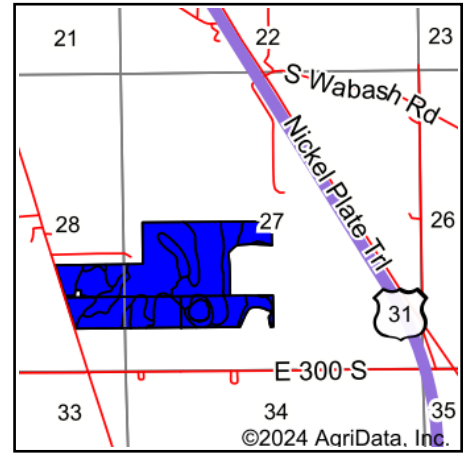


Soils Map



Soils data provided by USDA and NRCS.



State: **Indiana**
 County: **Fulton**
 Location: **27-30N-3E**
 Township: **Rochester**
 Acres: **115.62**
 Date: **4/3/2024**



Maps Provided By:



Area Symbol: IN049, Soil Area Version: 26

Code	Soil Description	Acres	Percent of field	Non-Irr Class Legend	Non-Irr Class *c	Corn Bu	Soybeans Bu	*n NCCPI Overall
MeB	Metea loamy sand, 2 to 6 percent slopes	40.21	34.8%		Ille	110	39	63
CrA	Crosier loam, 0 to 2 percent slopes	25.97	22.5%		Ilw	154	50	69
MaA	Markton loamy sand, 0 to 2 percent slopes	21.83	18.9%		Illw	117	35	57
Wh	Washtenaw silt loam	11.81	10.2%		Ilw	145	35	84
Wa	Walkill silt loam	4.89	4.2%		Illw	175	49	91
WkB	Wawasee fine sandy loam, 2 to 6 percent slopes	4.89	4.2%		Ile	145	51	75
HpjmA	Houghton muck, disintegration moraine, 0 to 2 percent slopes	2.72	2.4%		Vw			55
WkC2	Wawasee fine sandy loam, 6 to 12 percent slopes, eroded	2.50	2.2%		Ille	130	46	70
Bb	Barry loam	0.70	0.6%		Ilw	175	49	74
Mx	Muskego muck, drained	0.10	0.1%		IVw	138	36	90
Weighted Average					2.67	127.3	40.5	*n 67.1

*n: The aggregation method is "Weighted Average using all components"

*c: Using Capabilities Class Dominant Condition Aggregation Method