

Scalwifermar
dial refer to map **

Tract #3 62 ac.
Foot

6.2 ac

900N

8 1/2 P10

24 1/2

6 PL

4 1/2

18" H 6

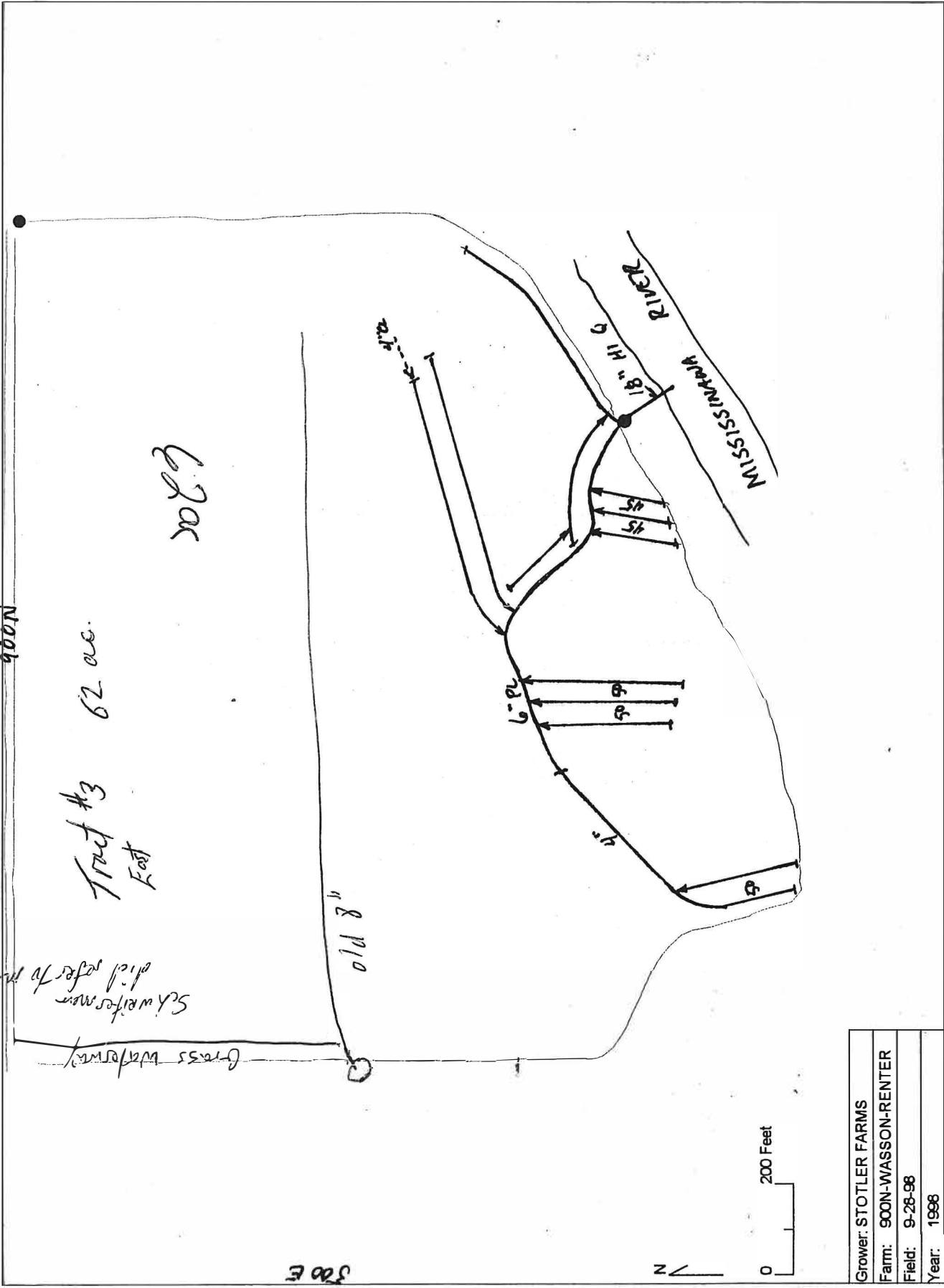
MISSISSIPPI RIVER

4 1/2
4 1/2

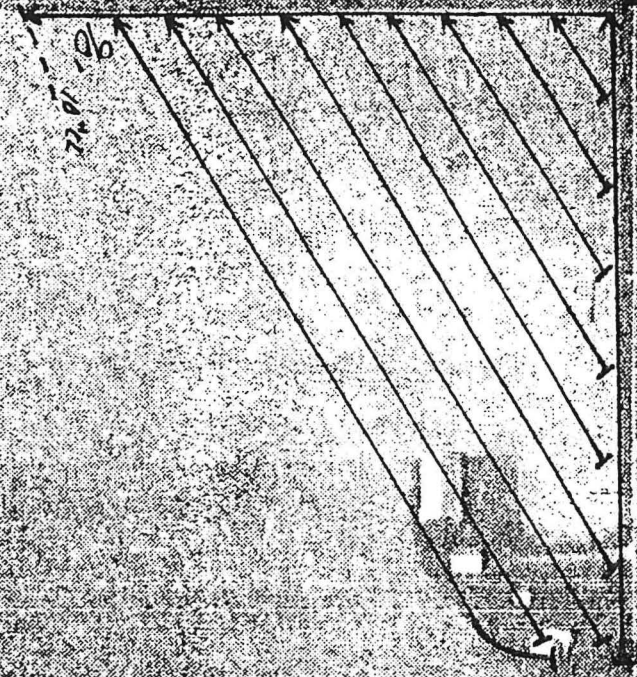
0 200 Feet

300 E

Grower: STOTLER FARMS
Farm: 900N-WASSON-RENTER
Field: 9-28-98
Year: 1998



STOTLER FARMS
JEFF WASSON - OWNER
SECTION 8
JACKSON TWP.
KANDOLPH CO.
3/3/95



* *

27a.

↑

6" Plastic

VAGEDS FARM DRAINAGE
PO BOX 598
FORT RECOVERY, OH 45846-0598

← 11.524" 11" Co Ex white tube

John Skiller
April 2009

40' 40' 40' 40' 40' 40' 40' 40'

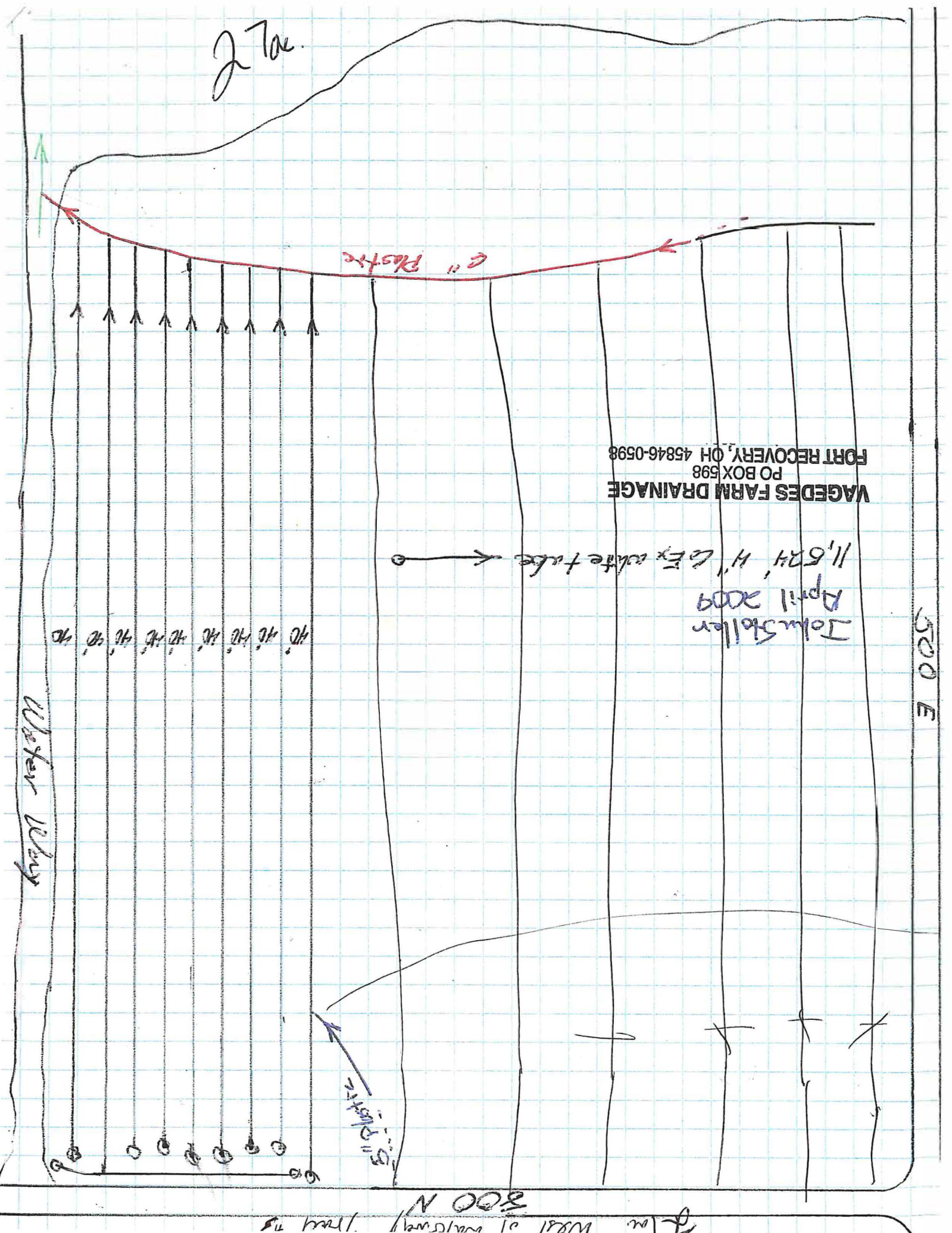
Water Bay

500 E

5" Plastic

800 N

2m West of driveway 1 row 15



2 mi. west of waterway / road 75
300 N

500 E

John Stoller
April 2009

11,524' 4" Co Ex white tube ←

VAGEDES FARM DRAINAGE
PO BOX 598
FORT RECOVERY, OH 45846-0598

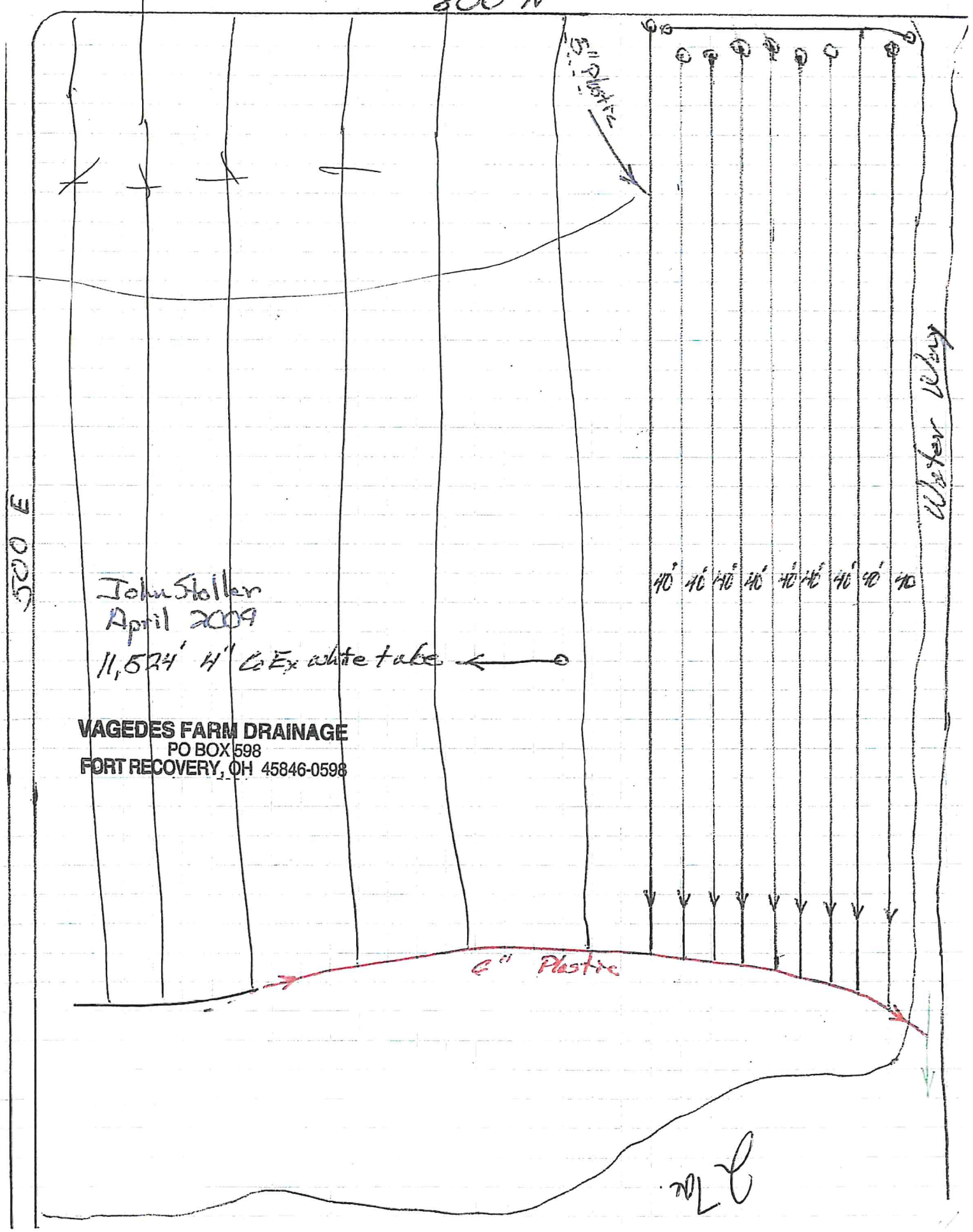
3" Plastic

40' 40' 40' 40' 40' 40' 40' 40' 40'

Water Way

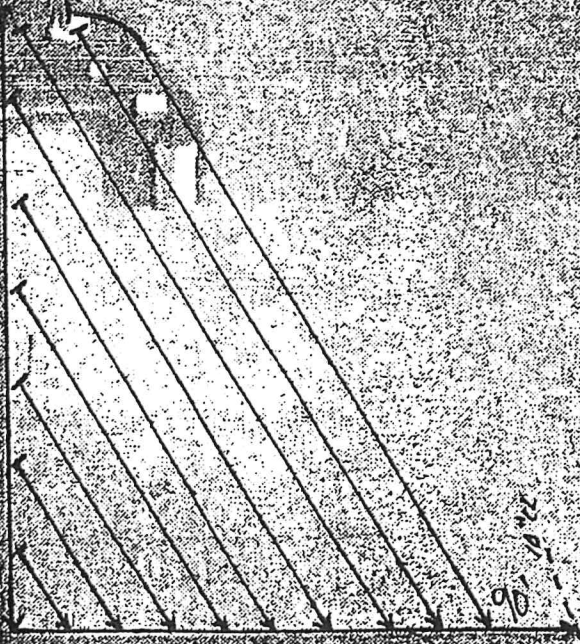
3" Plastic

2012



* *

STUTLER FARM
JERRY WASSON - RESTER
SECTION 8
JACKSON TWP.
RANDOLPH CO.
3/3/95



90' 0" W