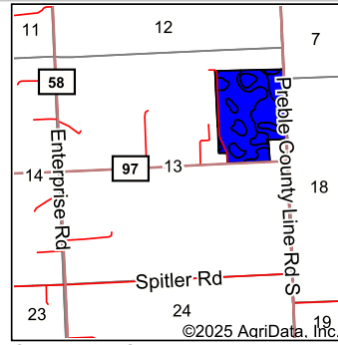
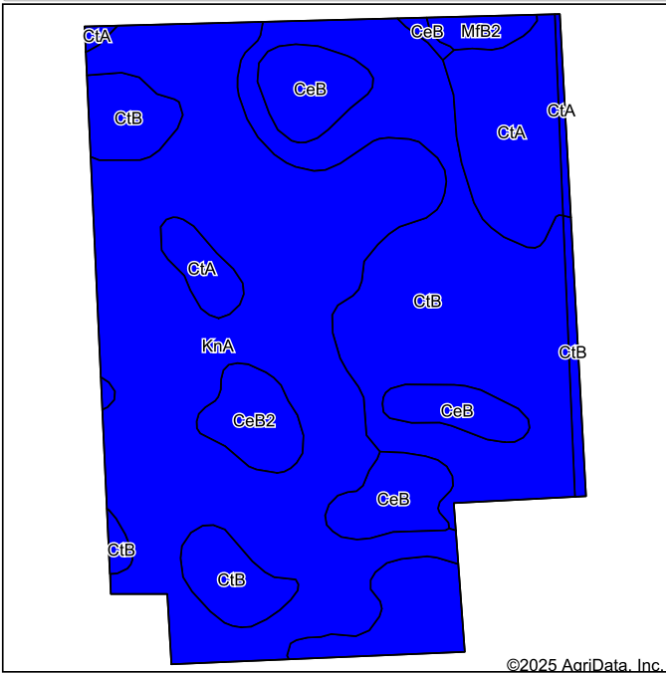


Soils Map



State: **Ohio**
 County: **Preble**
 Location: **13-5N-3E**
 Township: **Lanier**
 Acres: **74.92**
 Date: **8/6/2025**



Soils data provided by USDA and NRCS. ©2025 AgriData, Inc.

Area Symbol: OH113, Soil Area Version: 23																				
Area Symbol: OH135, Soil Area Version: 23																				
Code	Soil Description	Acres	Percent of field	Non-Irr Class Legend	Non-Irr Class %c	Alfalfa hay Tons	Corn Bu	Grass legume hay Tons	Kentucky bluegrass AUM	Oats Bu	Orchardgrass alfalfa hay Tons	Orchardgrass red clover hay Tons	Pasture AUM	Soybeans Bu	Tall fescue AUM	Wheat Bu	Winter wheat Bu	*n NCCPI Soybeans	*eFOTG PI	
KnA	Kokomo silt loam, 0 to 1 percent slopes	33.73	45.0%	■	llw		158	5.2					10.4	55			64	66	88	
CtB	Crosby-Celina silt loams, 2 to 4 percent slopes, eroded	24.93	33.3%	■	llw		130	4.5					8.9	43			58	49	80	
CtA	Crosby-Celina silt loams, 0 to 2 percent slopes	6.50	8.7%	■	llw		139	4.6					9.1	46			62	54	81	
CeB	Celina silt loam, 2 to 6 percent slopes	5.85	7.8%	■	lle		131	4.3		70			8.7	46			58	62	76	
CeB2	Celina silt loam, 2 to 6 percent slopes, eroded	2.06	2.7%	■	lle	4	115	4.3	3.6	74.2		5	4.4	8	39	5.5	40	51	49	73

Soils data provided by USDA and NRCS.



Code	Soil Description	Acres	Percent of field	Non-Irr Class Legend	Non-Irr Class *c	Alfalfa hay Tons	Corn Bu	Grass legume hay Tons	Kentucky bluegrass AUM	Oats Bu	Orchardgrass alfalfa hay Tons	Orchardgrass red clover hay Tons	Pasture AUM	Soybeans Bu	Tall fescue AUM	Wheat Bu	Winter wheat Bu	*n NCCPI Soybeans	*eFOTG PI
MfB2	Miamian-Celina silt loams, 2 to 6 percent slopes, eroded	0.79	1.1%	■	Ile		128	4.2					8.5	45			57	48	74
CtB	Crosby-Celina silt loams, 2 to 4 percent slopes, eroded	0.71	0.9%	■	Ilw		130	4.5					8.9	43			58	49	79
CtA	Crosby-Celina silt loams, 0 to 2 percent slopes	0.35	0.5%	■	Ilw		139	4.6					9.1	46			62	54	81
Weighted Average					2.00	0.1	143.1	4.8	0.1	7.5	0.1	0.1	9.5	48.8	0.2	1.1	60.9	*n 58.1	83.1

*efotg PI: Obtained from the NRCS eFOTG (<http://efotg.sc.egov.usda.gov>)

*n: The aggregation method is "Weighted Average using all components"

*c: Using Capabilities Class Dominant Condition Aggregation Method