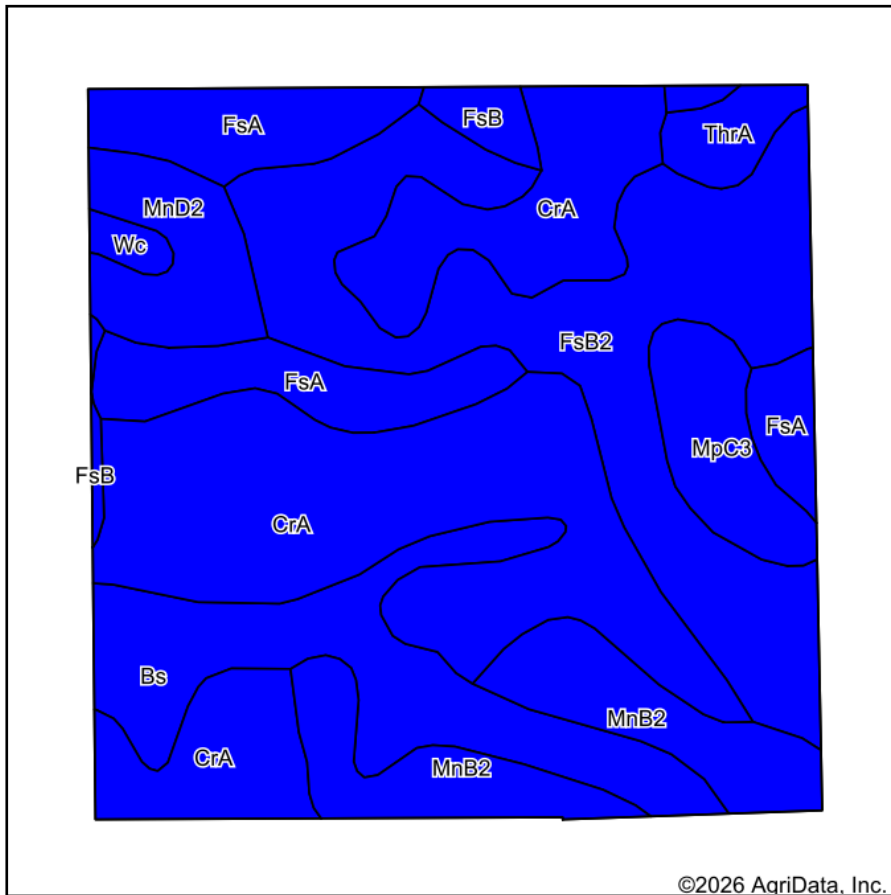
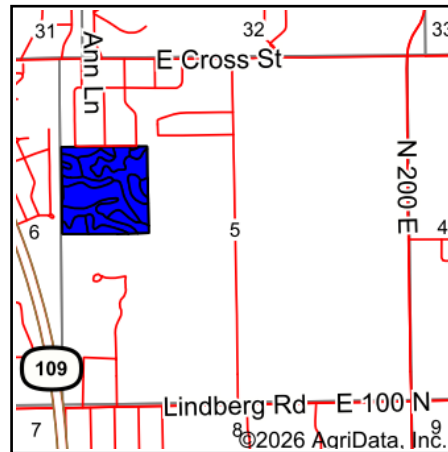


Soils Map



©2026 AgriData, Inc.

Soils data provided by USDA and NRCS.



State: **Indiana**
 County: **Madison**
 Location: **5-19N-8E**
 Township: **Anderson**
 Acres: **41.29**
 Date: **4/22/2026**



Area Symbol: IN095, Soil Area Version: 28

Code	Soil Description	Acres	Percent of field	Non-Irr Class Legend	Non-Irr Class *c	Corn Bu	Soybeans Bu	*n NCCPI Corn	*n NCCPI Soybeans
CrA	Crosby silt loam, fine-loamy subsoil, 0 to 2 percent slopes	13.48	32.7%		llw	155	51	64	57
FsB2	Fox silt loam, till substratum, 2 to 6 percent slopes, moderately eroded	9.46	22.9%		lle	126	44	64	63
Bs	Brookston silty clay loam, 0 to 2 percent slopes	4.76	11.5%		llw	173	51	73	74
FsA	Fox silt loam, till substratum, 0 to 2 percent slopes	4.38	10.6%		lls	123	42	66	64
MnB2	Miami silt loam, 2 to 6 percent slopes, eroded	3.82	9.3%		lle	142	49	63	46
MnD2	Miami silt loam, 12 to 18 percent slopes, moderately eroded	1.91	4.6%		lVe	125	44	58	49
MpC3	Miami soils, 6 to 12 percent slopes, severely eroded	1.73	4.2%		lVe	125	44	47	27
ThrA	Treaty silty clay loam, 0 to 1 percent slopes	0.75	1.8%		llw	181	64	81	76
FsB	Fox silt loam, till substratum, 2 to 6 percent slopes	0.72	1.7%		lls	131	46	67	64
Wc	Washtenaw complex	0.28	0.7%		llw	165	49	92	83
Weighted Average					2.18	143.3	47.8	*n 64.7	*n 59.1

*n: The aggregation method is "Weighted Average using all components"

*c: Using Capabilities Class Dominant Condition Aggregation Method

Soils data provided by USDA and NRCS.