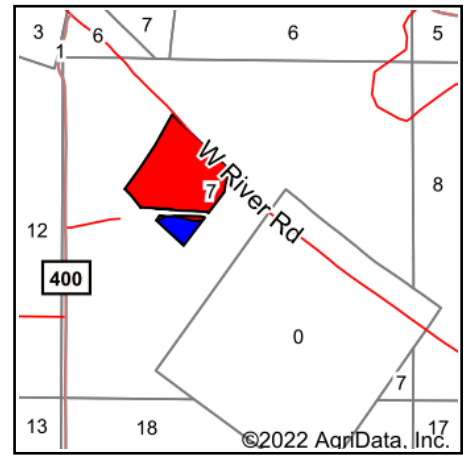
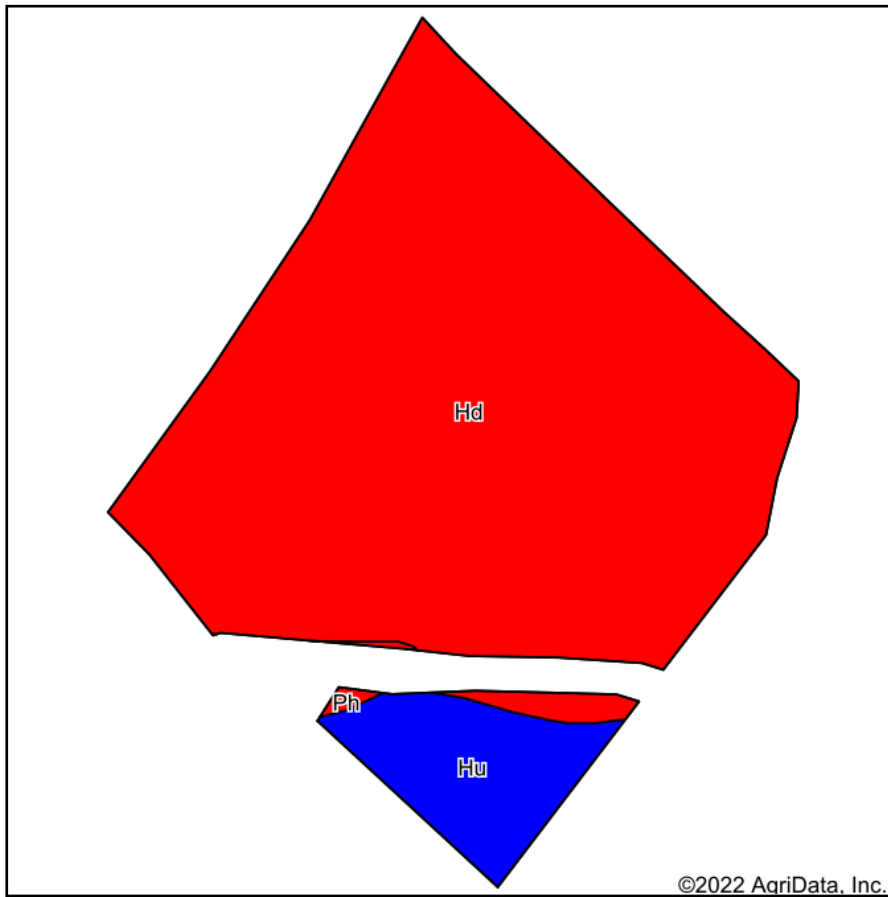


Soils Map



State: **Indiana**
 County: **Pike**
 Location: **7-1N-8W**
 Township: **Madison**
 Acres: **37.83**
 Date: **9/9/2022**



Maps Provided By:



© AgriData, Inc. 2021

www.AgriDataInc.com



Area Symbol: IN125, Soil Area Version: 22

Code	Soil Description	Acres	Percent of field	Non-Irr Class Legend	Non-Irr Class *c	Corn Bu	Grass legume hay Tons	Grass legume pasture AUM	Pasture AUM	Soybeans Bu	Winter wheat Bu	*n NCCPI Soybeans
Hd	Haymond silt loam, 0 to 2 percent slopes, frequently flooded	33.97	89.8%		IIIw	145	5	8		47	56	79
Hu	Huntsville silt loam, rarely flooded	3.71	9.8%		I	141	5		10	45	71	85
Ph	Petrolia silty clay loam, 0 to 2 percent slopes, frequently flooded	0.15	0.4%		IIIw	131	4	7		40	50	82
Weighted Average					2.80	144.6	5	7.2	1	46.8	57.4	*n 79.6

*n: The aggregation method is "Weighted Average using all components"

*c: Using Capabilities Class Dominant Condition Aggregation Method

Soils data provided by USDA and NRCS.